



VISION



AI



CLOUD



SECURITY

Sensor Module

iSM-IMX307



SONY

Powered by Sony

Key features:

- Ready to embed with iENSO vision platform ecosystem
- 2MP resolution and 1080p60 video performance
- Digital overlap HDR supported
- BSI structure to achieve high-sensitivity and high-quality image capture in multiple lighting condition
- Standard MIPI CSI-2 output interface
- Various lens options available

Compatible embedded vision camera platforms:

- Any camera platform supporting MIPI CSI-2 interface

Image Sensor	
Sensor Model	Sony IMX307
Shutter Type	Rolling Shutter
Chromaticity/Signal Type	Color/RGB
Optical Format	1/2.8"
Pixel Size	2.9 x 2.9 μm
Max. Resolution	2MP / 1920 x 1080
Frame Rate (max.)	60fps 12bit / 10bit
Bit Depth(s)	10 / 12 bit
HDR	Digital Overlap

Interface	
Data Interface	MIPI CSI-2 (2 / 4 lane)
Communication Interface	I2C
Input Voltage	3.3V
Interface Connector	Hirose DF40 series • DF40C-40DP-0.4V(51)

Mechanical	
Dimensions (w/o Lens)	26 x 26 mm

Optical	
Lens Mount	M12
Optical	Consult iENSO for lens options

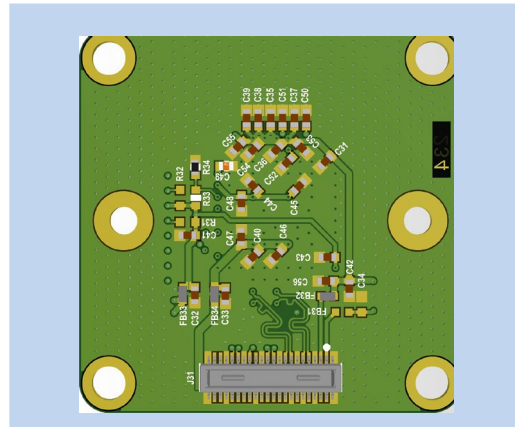
Environmental	
Operating Temperature	-30°C to +85°C (Function) -10°C to +60°C (Performance)
Storage Temperature	-40°C to +85°C
Ambient Humidity	20% to 90% RH, non-condensing



Give your vision the edge

- Application-based turnkey embedded vision solutions
- Edge AI for powerful on-device decision-making
- Flexible Cloud platform and end-to-end security

Sensor Module Pinout



J31		Pin 1	
PIN	Name	PIN	Name
1	3.3V	23	GND
2	3.3V	24	XTRIG
3	2.9V	25	DMO2 P
4	2.9V	26	GND
5	GND	27	DMO2 N
6	GND	28	SADDR
7	DMO0 P	29	GND
8	MCLK	30	SDA
9	DMO0 N	31	DMO3 P
10	GND	32	SCK
11	GND	33	DMO3 N
12	RST_N	34	VS-SH
13	DMO1 P	35	GND
14	GND	36	GND
15	DMO1 N	37	1.8V
16	GPIO0	38	1.8V
17	GND	39	1.2V
18	GPIO1	40	1.2V
19	DCLK P	41	GND
20	GPIO2	42	GND
21	DCLK N	43	GND
22	XFLASH	44	GND

Connector Type: Hirose DF40C-40DP-0.4V(51)

Popular Applications

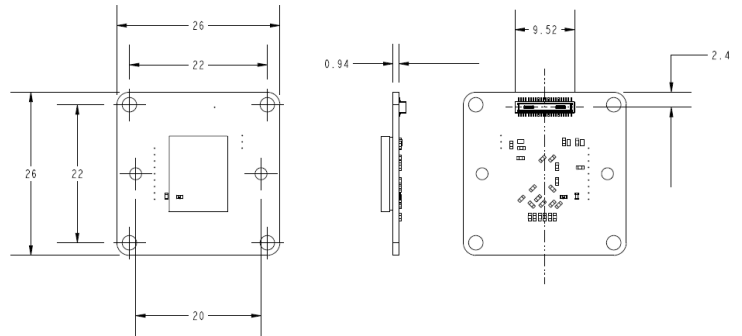


SECURITY



INDUSTRIAL /
ROBOTICS

Mechanical Drawing



For more information, visit [iENSO.com](https://www.ienso.com)

- Custom module and optics available upon request
- Minimum order quantities may apply
- Contact sales to discuss your specific needs



www.ienso.com



Americas
Global HQ Toronto
20 Mural St., Unit 7
Richmond Hill, ON Canada L4B 1K3
(905) 763-6938 • vision@ienso.com

Europe
Kyiv, Ukraine • EU@ienso.com

Middle East
Tel Aviv, Israel • ME@ienso.com

Asia
Shenzhen, PRC • Asia@ienso.com