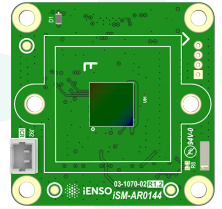


iENSO USB3 Sensor Module Evaluation Kit

iSM-USB-EVK

Image Sensor Modules are an essential component of any embedded vision application. When designing a camera for an application, finding the right image sensor can be a challenging part of the project as there are many variables to consider. The iENSO Sensor Module evaluation kit (iSM EVK) is a tool for R&D teams to 'test drive' some of the most popular CMOS image sensors from leading technology partners such as Sony™ and Onsemi™. The evaluation kit offers a quick and efficient way to demonstrate sensors performance and features using a software interface that gives you control of image settings.



EVK kit shown in display case

Highlights

- Supports multiple image sensor modules, with resolutions from 720p to 20MP
- Standard MIPI CSI2 interface support
- Pre-loaded drivers to make setup and use simple
- High speed USB 3.0 Output
- Image Analysis Software enables image streaming and adjustment
- Software is compatible with Windows 7, 8 and 10

EVK Software Application

- Supports real-time streaming
- Full control of sensor and image quality parameters
- Image quality measurement capabilities
- Optical parameters adjustment

Give your vision the edge

- Application-based turnkey embedded vision solutions
- Edge AI for powerful on-device decision-making
- Flexible Cloud platform and end-to-end security



Compatible iENSO MIPI Sensor Modules

Sensor Module	Sensor Brand	Sensor Model	Resolution	Optical Format (inch)	Available Standard Lenses HFOV (°)
iSM-IMX415	Sony	IMX415	8MP	1/2.8	75
					85
iSM-IMX462	Sony	IMX462	2MP	1/2.8	70
					100
iSM-IMX577	Sony	IMX577	12MP	1/2.3	72
					90
iSM-IMX334	Sony	IMX334	8MP	1/1.8	42
iSM-AR0144	ONsemi	AR0144	1MP	1/4	50
					80
iSM-AR0234	ONsemi	AR0234	2MP	1/2.6	65
					105
iSM-AR0521	ONsemi	AR0521	5MP	1/2.5	70
					90
iSM-IMX283	Sony	IMX283	20MP	1	65
					100

For full sensor module product information visit: <https://www.ienso.com/mipi-sensors/>

iSM-USB-EVK includes:

- Sensor Interface Board
- Main Processing Unit
- MIPI Sensor Module(s)
- Lens(es)
- Flexible printed circuit (FPC) cable
- 12V Power Supplies
- Instructions

Ordering Information:

Contact us at EVK@ienso.com for additional sensor module options or for customized optics inquiries.



EVK compatible with 2 sensor modules sizes



www.ienso.com



Established in 2003, iENSO provides embedded vision data systems that help global brands turn their products into vision data devices. iENSO provides fully secure end-to-end solutions that capture vision data and process it at the Edge and in the Cloud, giving product companies the opportunity to unlock the business benefits of recurring revenue and data monetization.

Americas

Global HQ Toronto
20 Mural St., Unit 7
Richmond Hill, ON Canada L4B 1K3
(905) 763-6938 • vision@ienso.com

Europe

Kyiv, Ukraine • EU@ienso.com

Middle East

Tel Aviv, Israel • ME@ienso.com

Asia

Shenzhen, PRC • Asia@ienso.com